

smarter living in smart city



BHUBANE



SWAR



Bhubaneswar is a hub of glorious history, a place of natural beauty, and an emerging hotspot of South Asia's commerce, particularly in mining, mineral trade and tourism. Apart from being one of the fastest-growing cities, it is also given the tag of India's 4th smartest city and is expected to lead its economic, demographic and technological transformation in the years to come. It may be the only city in India to harbour an array of prestigious medical and educational institutions like IIT, XIMB, NISER, NIFT, and AIIMS, to name a few. With an eagle eye focus to improve its services on important core sectors like governance, urban planning, education, transport, etc., it plans to

transform the face of Odisha by promoting growth, increasing accessibility and improving the efficiency of services with the integration of ICT.

Bhubaneswar is also well-connected to other chief cities like Kolkata, Hyderabad and Chennai through the National Highway 5 (NH 5). It also possesses one major airport i.e., the Biju Patnaik International Airport which is present just a few kilometres away from the city centre. Being the capital of one of India's most metal and mineral-rich states, it also hosts some of the most eminent industrial powerhouses like Jindal, TATA, Vedanta, SAIL, and many others.





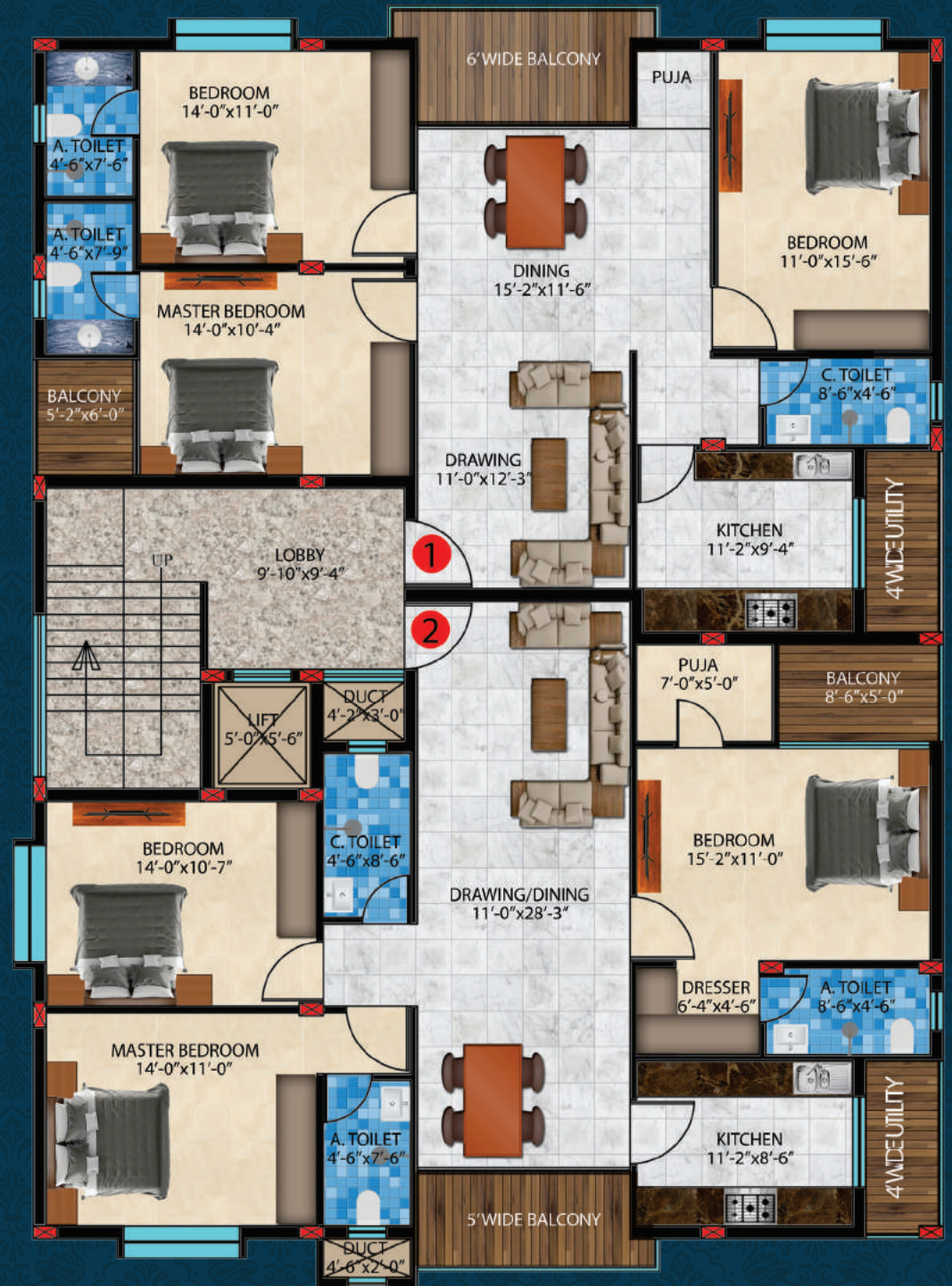
Typical Floor Plan

FLAT 1:

Total carpet area:
1214.5 sq.ft.
Super built-up area:
1867.7 sq.ft.

FLAT 2:

Total carpet area:
1276.7 sq.ft.
Super built-up area:
1963.7 sq.ft.



smart floor plan

FLAT 1:

Total carpet area:

1214.5 sq.ft.

Super built-up area:

1867.7 sq.ft.





FLAT 2:

Total carpet area:

1276.7 sq.ft.

Super built-up area:

1963.7 sq.ft.



smart location for smarter living

Evos brings for you one of its most premium projects, Evos Exotica – a luxurious property having 3 BHK apartments situated in the heart of the city, Saheed Nagar. Touted as one of the best developed posh localities of Bhubaneswar, Saheed Nagar is an elite residential area that has now also transformed into the city's high-end commercial center along Janpath.

It is well-connected to other major areas of Bhubaneswar like the National Highway 5 (NH 5) that runs on its north and adjoins Rasulgarh and Mancheswar Industrial Area. Evos Exotica is the right investment for you if you are looking for a home that would provide a luxurious living space with its share of privacy and comfort.

smarter living



Power Backup 24x7
(Common area and Lift)



24x7 Security



Video Door Phones



Borewell Water



Provision for Intercom, Telephone



Sewage Treatment Plant



Car Parking



Lift



Rainwater Harvesting



Water Supply

smart furnishings

Structure

RCC Framed structure with infilled brickwalls

Flooring

Bedroom: Vertified Tiles (Brand- Somany or equivalent)

Living and Dining: Vertified Tiles (Brand- Somany or equivalent)

Balcony: Anti skid ceramic tiles

Staircase: Granite/Marble

Wall Finish

Interior: Wall putty and superior acrylic emulsion paint/

Plastic paint (double coat) – Asian paint or equivalent

Exterior: Weather resistant paint.

Doors and Windows

Door frame: Sal wood

Main Door: Teak wood

Other door: Solid core flush door

Windows: UPVC windows (Finesta or equivalent)

Toilets

Flooring: Anti skid ceramic tiles

Walls: Designer tiles upto 7 feet height

Fittings and Sanitary ware: CP fittings (Jaquar or eqivalent)

Kitchen

Flooring: Anti skid/ Ceramic floor tiles

Platform: Granite with stainless steel tank

Walls: 2 feet designer ceramic tiles above the cooking platform

Fittings: CP fittings of (Jaquar or equivalent)

Electricals

Adequate light points and power points in all rooms, kitchen and toilet

Copper wiring in concealed PVC conduits

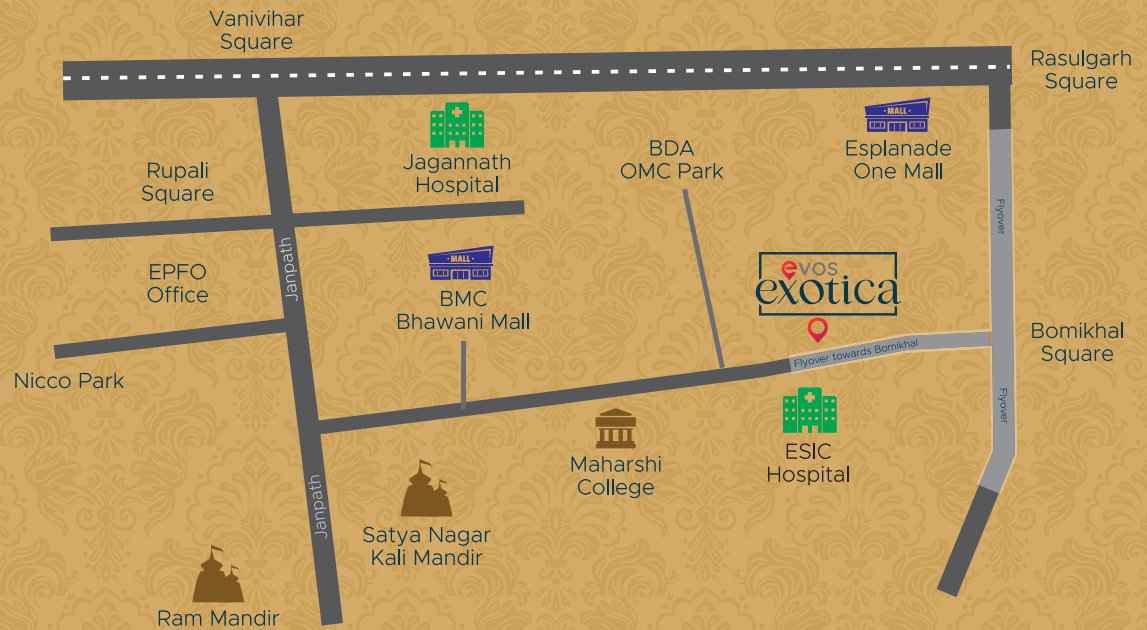
Modular switches for lights and power points

TV and telephone points

Provision for AC in bedroom, geyser in toilets, refrigerator and water purifier point in Kitchen

Distribution board with MCBs

Location Map



evos : a name
that redefines
trust

Evos Buildcon, a reputed name in the real-estate industry, is based out of Bhubaneswar. Founded in 2005, it is committed to enhancing the quality of life for its clients through its transparency, innovative technology and distinguished service. Evos builds homes for everyone where each and every member witnesses and spreads love all around. With a strong emphasis on design, architecture, engineering and construction, Evos aims to provide its customers with an exclusive lifestyle for them to live, love and grow.



ongoing projects



EVOS
EMPIRE

Madanpur, Bhubaneswar



BILASINI
ENCLAVE

Ghatikia, Bhubaneswar



CITY
HOMES

Phase I



EVOS
PARADISE

Patrapada, Bhubaneswar

upcoming projects



EVOS
SEA ROSES

Sea Beach, Puri



CITY
HOMES

Phase II



EVOS
NIRVANA

Vivekananda Marg, Bhubaneswar



EVOS
OPAL

Baramunda, Bhubaneswar



EVOS
ELANZA

Jagamara, Bhubaneswar



EVOS-8
DUPLEX APART.

Ghatikia, Bhubaneswar



EVOS
EXOTICA

Sahidnagar, Bhubaneswar



EVOS
SRICHANDAN

Narogoda, Bhubaneswar



Corporate Office: Plot No : M/76, Housing Board Colony, Baramunda, Bhubaneswar, Odisha-751003

9776099997 | support@evos.co.in

 www.evosbuildcon.com  /EvosBuildcon  /EvosBuildcon_

Disclaimer: This brochure is only for marketing purpose for highlighting the concept and proposal of the project and in no way can be used as legal document for claims. The specification and details in this brochure are tentative and are subject to change without prior notice to any intended buyer and it is the sole discretion of the promoter and architect.