



Live  
your  
roots



Our parents gave everyone of us roots and wings. Roots to know where home is and wings to fly high. Like the branches in a tree, we all choose to grow in different directions. And yet our roots remain one. Understanding our heritage, our roots, and our ancestry is an important part of carving out our future.

We all have come a long way from where we started and in this process achieved a lot. Now's the time to heed that calling in your head. To be like a tree that stays grounded connected with your roots. To turn over a new leaf. Enjoy your own natural being.





I'm happy to present NIRVANA a creation of passion, rising high over the skyline of Vivekanand Marg, a place that bears the all the living memories of Old Temple Town of Bhubaneswar bringing you closer to your roots.

A lovemark from EVOS, Nirvana presents to you a redefining lifestyle with the introduction of Bhubaneswar's first sonic energy homes featuring a roof-top wind-chime park, a Yoga & meditation centre, a refreshing roof-top pool and a state-of-the-art gymnasium.

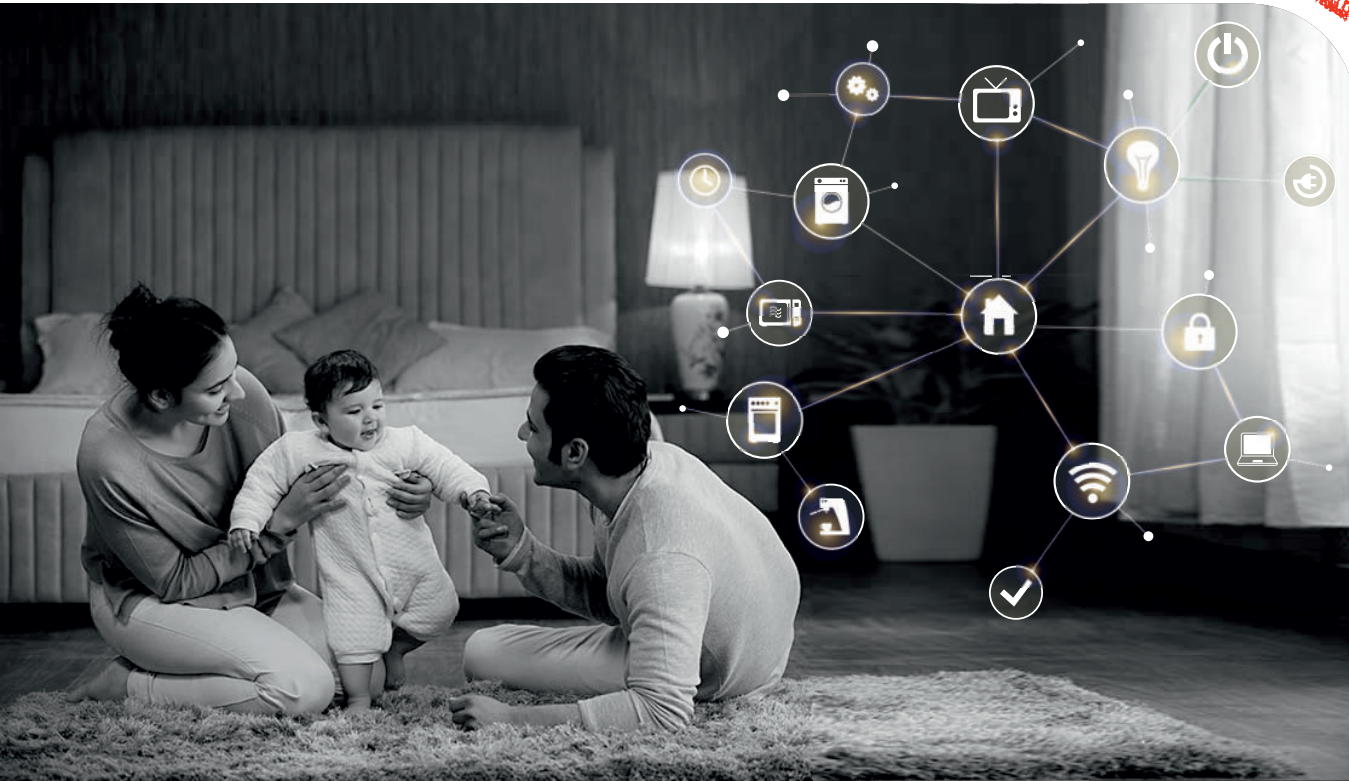
I invite you to live your roots

Kalinga Rath  
Founder & Managing Director  
EVOS Buildcon Pvt. Ltd.

Presenting  
**NIRVANA**  
from EVOS







# A futuristic lifespac Rooted in your past & present

Live in the Real Charm of Old Bhubaneswar! Find your Nirvana at the Most Luxurious Residential Lifespac of Old Town, Bhubaneswar.

## Project Highlights:

- 5 Storey Premium Tower
- Offering Large 3 & 4 BHK Homes
- Apartments with sweeping decks
- Overlooking the old town views
- Lifestyle indulgences include swimming pool, gym yoga & meditation deck

# Closer to your new world. Rooted in the old town charm.

Vivekanand Marg, situated at the cross roads of Old Town represents the perfect place where you can experience the best of heritage and modern living. A thriving residential address with ready essential and social infrastructure. It is one of the most sought after destination to live. Home to a plethora of heritage attractions and modern creations, NIRVANA offers a very high quality of life and attracts the premium residents.



Key Locations & Distances:

- 1 Min ■ ————— ■ Rama Krishna Mission.
- 2 Min ■ ————— ■ Departmental Store (Adhaar Fresh)
- 3 Min ■ —————
- 3 Min ■ —————
- 4 Min ■ —————
- 4 Min ■ —————
- 5 Min ■ —————
- 5 Min ■ —————



### The Lingaraj Temple

Home to centuries old Lingaraj Temple, a Hindu Temple dedicated to Lord Shiva and is one of the oldest temples and popular tourist attraction

### Bindu Sagar

The Bindu Sagar lake, believed to have been originated in 7th century AD, is used by the devotees and priests for conducting the rituals of lord Lingaraj. Legends have it that this lake was created by Lord Shiva by bringing water from all the holy places to quench the thirst of Goddess Parvati.

### Ramkrishna Mission Math

A monastic organization brought into existence by Ramakrishna, a 19th-century saint of Bengal. Sri Ramakrishna Math, Bhubaneswar is the first branch center of the Ramakrishna Order in Odisha. It was started in the year 1919 by Swami Brahmananda one of the direct disciples of Ramakrishna.

### The Janpath

The Janpath (literally meaning Common Man's Road) is a major North South thoroughfare of Bhubaneswar. Starting from Vani Vihar Square, it stretches up to Bapuji Nagar. This stretch of the city has some of the best retail outlets, great food and entertainment options. The stretch is dotted with an entire list of glitzy malls, branded showrooms, with amenities including multiplex, kids' zone, food court, cafes and restaurants etc

### The Biju Patnaik International Airport

Biju Patnaik Airport also known as Bhubaneswar Airport, is an International Airport serving Bhubaneswar. Named after the the former Chief Minister and famed aviator and freedom fighter Biju Patnaik , it is the 16th busiest airports in India and serves as one of the major civil aviation hubs in Eastern India.

---

- Lingaraj Temple.

---

- Janpath.

---

- Shoppers Stop/Utkal Galleria Mall.

---

- Biju Patnaik Park.

---

- Capital Hospital.

---

- International Airport.



## Closer to your dreams Rooted to your memories

Bask in the openness of expansive 3 & 4 BHK homes that are planned to realise maximum liveable area. The living rooms and the master bedrooms feature sweeping decks that overlook the majestic cityscape. They are further embellished with thoughtful amenities that include a Hydroponic Garden and a Barbecue Grill.









## Closer to your lifestyle Rooted to your inner self

Living at Nirvana means enjoying everyday bliss. Come home to Bhubaneswar's first sonic energy homes that feature a Wind-Chime Garden whose soothing sounds not only calm the body and mind but also infuses positive energy all along. The sky recreation also features curated indulgences for the entire family including a pool, a gym, and a yoga & meditation deck.









## LOCATION MAP

\*Not to scale



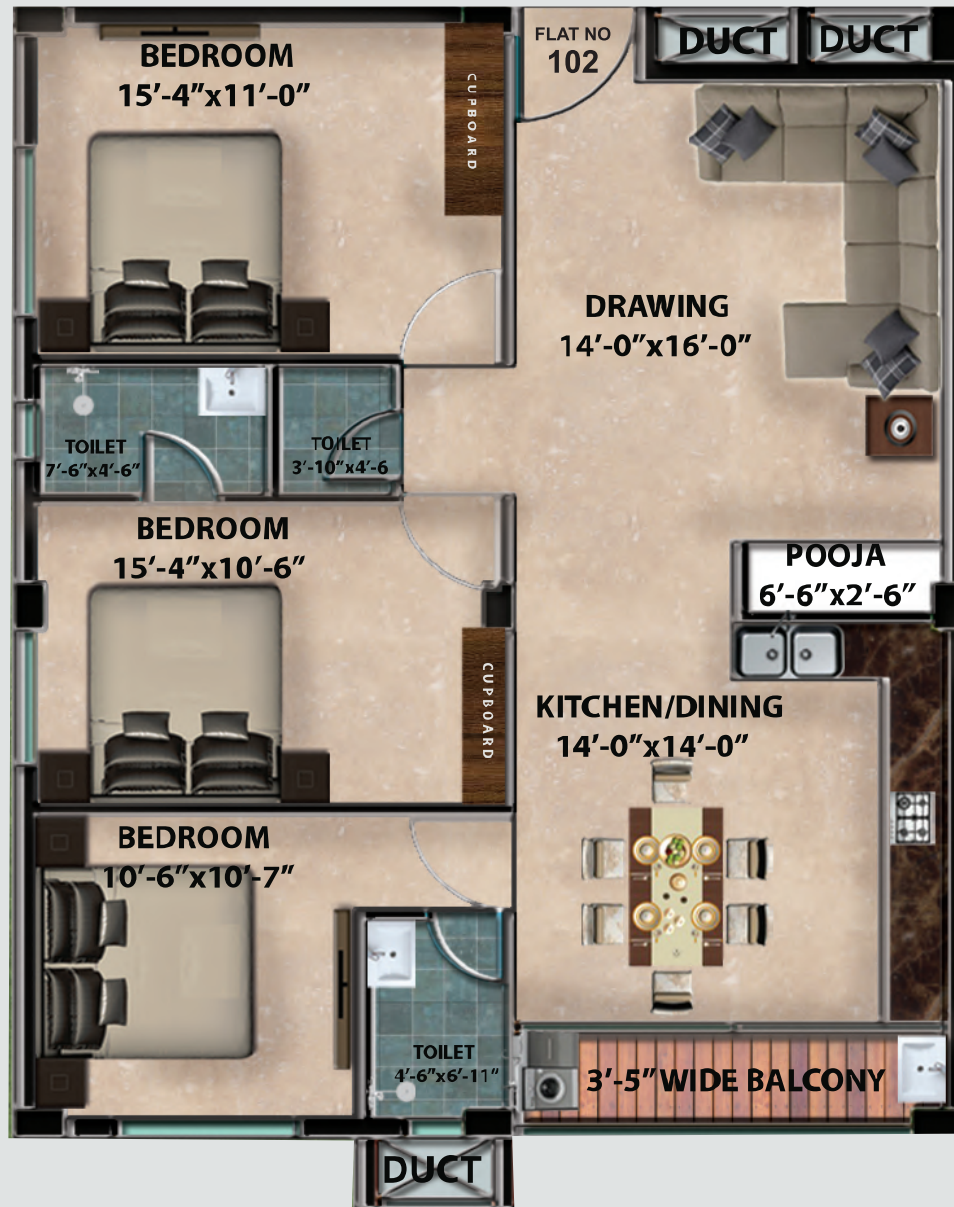


FLAT -101  
C.A. : 1490.53 SQFT

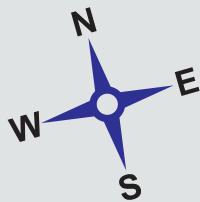




FLAT -102  
C.A. : 1115.2 SQFT



FLAT -103  
C.A. : 1454 SQFT



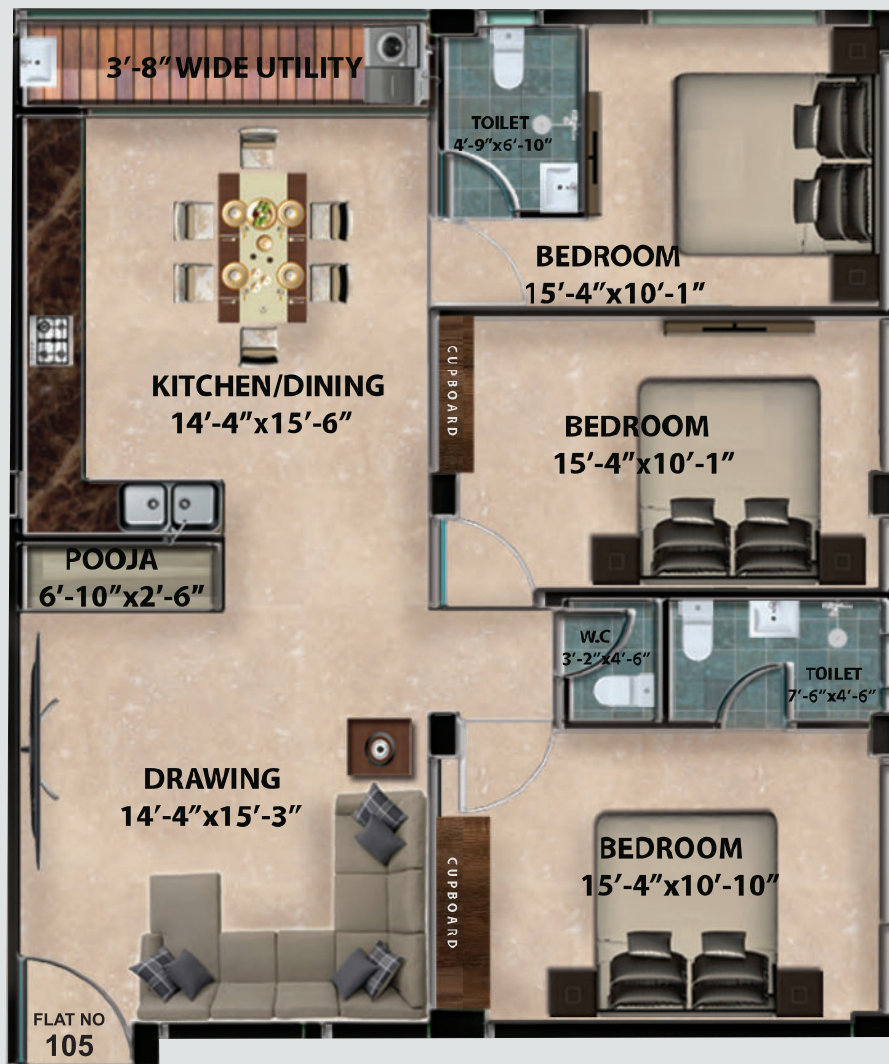
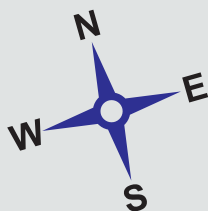




FLAT -104  
C.A. : 1575.82 SQFT

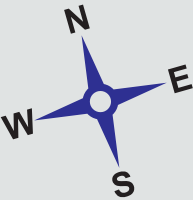


FLAT -105  
C.A. : 1113.62 SQFT





FLAT -106  
C.A. : 1552 SQFT





## Apartment Specifications

- 5 Storey Premium Tower
- Offering Large 3 & 4 BHK Apartments
- Apartments with sweeping decks overlooking the old town views
- Unique curations featuring Bhubaneswar's first Wind Chime Park
- Lifestyle indulgences include swimming pool, gym yoga & meditation deck

### Contact Us :

+91 97760 99997

[www.evosbuildcon.com](http://www.evosbuildcon.com)

[support@evos.co.in](mailto:support@evos.co.in)

Plot No: M/76, Housing Board Colony, Baramunda,  
Bhubaneswar, Odisha-751003

Presenting  
**NIRVANA**  
from EVOS



STRATEGIC PARTNER  
**JUSTO**